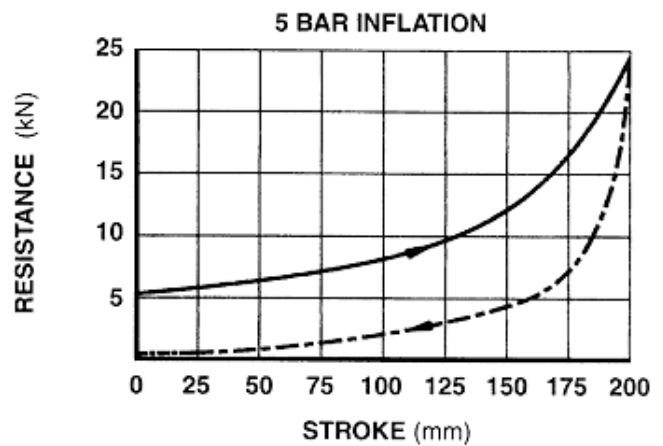
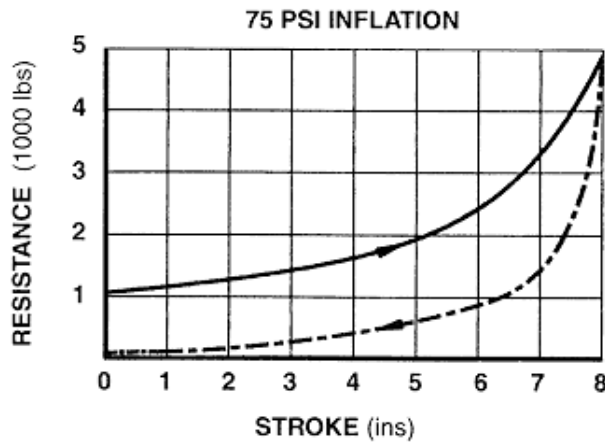


PERFORMANCE CHARACTERISTICS:

STROKE	(8 ins)	200 mm
ENERGY CAPACITY	(31,300 ft lbs)	42.5 kJ

STATIC RESISTANCE:

The graphs below show the static resistance at a **slow closure speed**, not at impact speed. Consult Gantrex if a reduced static resistance is required.

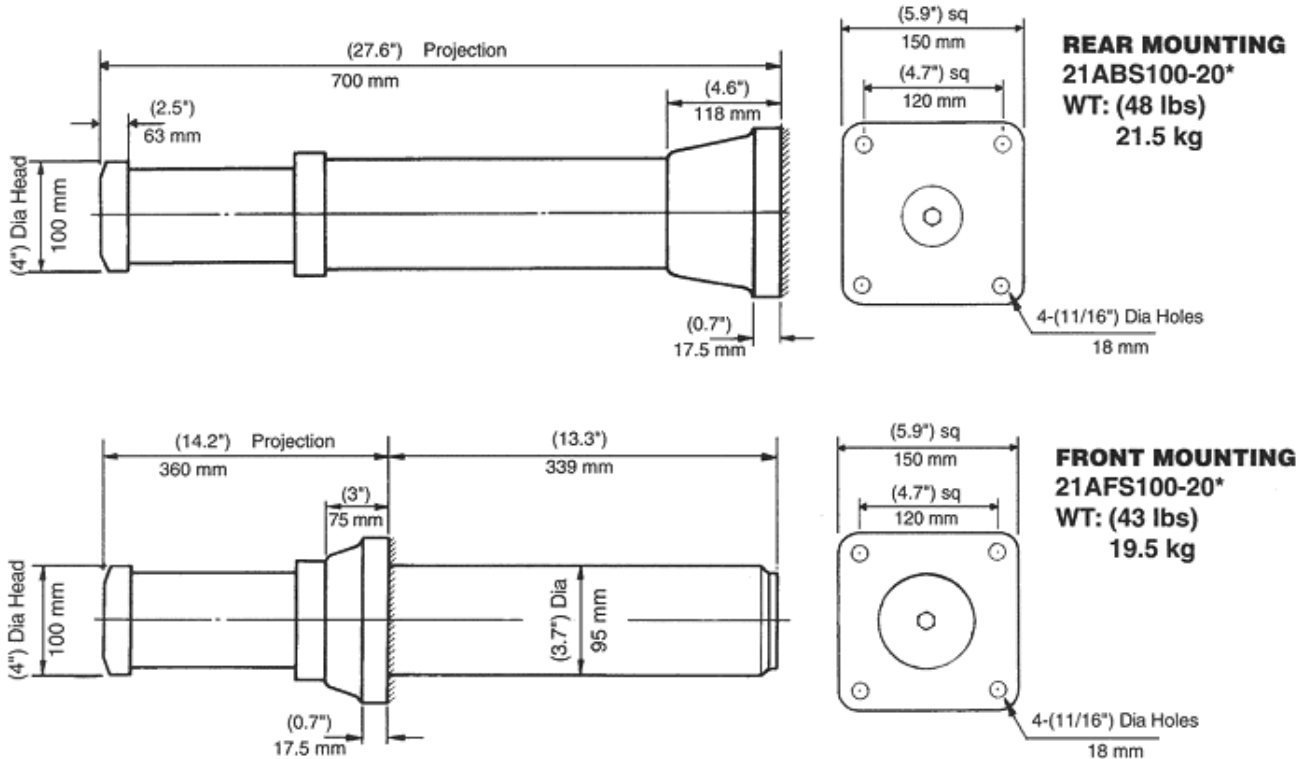


METERING PIN SELECTION:

USE "We" AS DETERMINED IN BUMPER SELECTION CALCULATIONS

IMPACT WEIGHT (We)			METERING PIN CODE*
	(1000 lbs)	Metric Tonnes	
UP TO	3.7	1.7	1
" "	7.7	3.5	2
" "	15.4	7.0	3
" "	29.0	13.0	4
" "	55.0	25.0	5
" "	110.0	50.0	6
" "	220.0	100.0	7
" "	440.0	200.0	8
" "	880.0	400.0	9

MOUNTING BRACKET SELECTION:



* Indicates Metering Pin Code (See over - Metering Pin Selection Table)

- EXTERNAL FINISH:** PLUNGER HAS STANDARD HARD CHROME PLATING. ALL OTHER SURFACES HAVE RED OXIDE PRIMER READY FOR FINISH COAT OF PAINT.
- MARINE PLATING:** MARINE PLATING ON PLUNGER FOR MARINE OR CAUSTIC ENVIRONMENTS. SPECIFY BY USING SUFFIX "F". E.G. 21AFS100-205F.
- BUMPER HEAD:** 125mm DIAMETER HEAD REQUIRED TO MEET AIST CODE. SPECIFY BY REPLACING "100" IN MODEL CODE WITH "125" E.G. 21SFS125-205.
- SAFETY CABLE:** REQUIRED TO MEET AIST AND OSHA CODES. SPECIFY BY REPLACING FIRST LETTER "A" IN MODEL CODE WITH "S" E.G. 21SFS100-205.
- PROTECTIVE BELLOWS:** SPECIFY USING SUFFIX "B" E.G. 21AFS100-205B.
- HIGH TEMPERATURE SEALS:** USE WHERE AMBIENT TEMPERATURE IS HIGHER THAN 140°F. SPECIFY USING SUFFIX "H" E.G. 21AFS100-205H.
- LOW DRIVE DOWN FORCE:** REDUCED PRE-CHARGED PRESSURE TO ALLOW FULL COMPRESSION UNDER DRIVE MOTORS. CONSULT GANTREX FOR ASSISTANCE. SPECIFY USING SUFFIX "L" E.G. 21AFS100-205L.
- MOUNTING BRACKETS:** AVAILABLE IN STANDARD, LOW AND VERY LOW FOOT MOUNTING BRACKETS. CRANE STOPS AND EXTENDER BRACKETS ARE ALSO AVAILABLE. CONSULT GANTREX FOR PROPOSAL DRAWING.