

SPECIFICATIONS		TYPE OF 7/8" BOLT			COMPONENTS
<ul style="list-style-type: none"> <li>Resistance to lateral force R max*</li> <li>Bolt torque</li> </ul>		A307 or Welded Stud	A325	A490	<b>STELCAM 17</b> 1 Clip 5120/16/38 made to accommodate 3/4", 7/8" and 1" hardware.
		6 kips	18 kips	24 kips	
		200 ft-lbs	200 ft-lbs (min.**)	200 ft-lbs (min.**)	1 Self locking Cam, 512_/16 drilled-out to accommodate 7/8" hardware.
<ul style="list-style-type: none"> <li>Lateral adjustment, total</li> <li>"N" available noses</li> <li>Weight</li> </ul>		5/8"			
		7/16", 5/8", 15/16"			Hex Lug will be painted <b>Yellow. Please indicate bolt size when ordering.</b>
		1.5 lbs			
<b>NOTES</b>					
See "Selection Table" for "F" Dimensions.					
See "General Specifications Stelcam Series" for additional clip information.					

\* R is calculated on the basis that the bolt threads are excluded from the shear plane.

\*\*Bolt torque shown is minimum required for clip performance. However, bolts can be torqued to higher value to meet applicable structural codes.

**GANTREX RAIL CLIP STELCAM® 17**

SELECTION TABLE					
RAIL SIZE	F (in)	RAIL ONLY CLIP PART NO.	GANTREX PAD MODEL NO.	RAIL ON GANTREX PAD CLIP PART NO.	AT SPLICE BAR CLIP PART NO.
104 CR	5"	Stelcam 17/104	130 RFS	Stelcam 17/104P	Stelcam 17C (4 per joint)
105 CR	5 3/16"	Stelcam 17/105	130 RFS	Stelcam 17/105P	
135 CR	5 3/16"	Stelcam 17/135	130 RFS	Stelcam 17/135P	
171 CR	6"	Stelcam 17/171	150 RFS	Stelcam 17/171P	
175 CR	6"	Stelcam 17/175	150 RFS	Stelcam 17/175P	

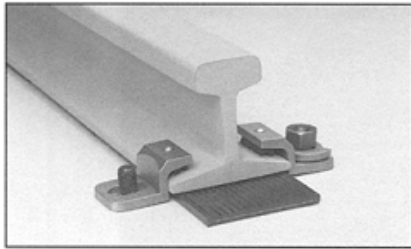
**NOTES**

- 1) To order clips without rubber noses consult GANTREX for proper selection.
- 2) GANTREX clips are available to suit most rail sections. Please consult GANTREX for details if your rail does not appear in the above table.
- 3) GANTREX recommends that rail joints be welded wherever possible.
- 4) Contact GANTREX for available protective coatings.

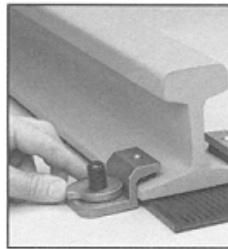
**MATERIALS**

- Self-locking Cam . . . . . Ductile Cast Iron
- Clip . . . . . Ductile Cast Iron
- Pressure Block (Nose) . . . . . Synthetic Rubber

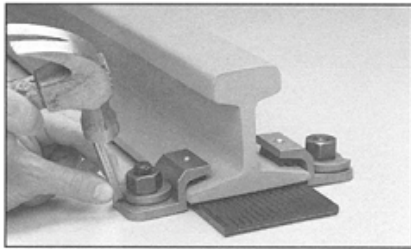
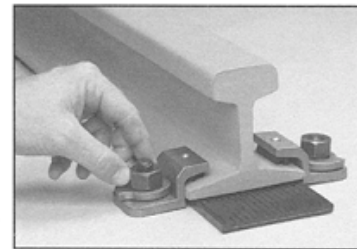
**INSTALLATION**



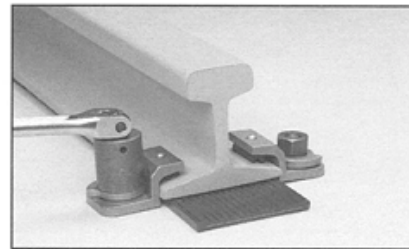
1. Position clip on bolt or stud.



2. Position self-locking cam. Install and lightly tighten nut.



3. Adjust self-locking cam to ensure tight contact between the rail and clip.



4. Tighten nut to required torque.

- Install clips in opposing pairs. (never stagger)
- Do not use cleaning fluids or protective coatings which contain ketones or similar chemicals, as they may seriously damage the rubber nose.

For complete crane runway installation services including rail welding, please contact GANTREX SYSTEMS through any of the sales offices listed below.

GANTREX reserves the right to discontinue or change specifications at any time without prior notice and without incurring any obligation whatsoever.  
 PATENTS APPLIED FOR IN MOST COUNTRIES INCLUDING THE UNITED STATES AND CANADA



**TOLL FREE: 800 2 GANTREX (800) 242-6873**

Web site: [www.gantrex.com](http://www.gantrex.com) • Email: [sales@gantrex.com](mailto:sales@gantrex.com)

© GANTREX, 2008  
 PRINTED in U.S.A.

Rev. 01/08