

SPECIFICATIONS		TYPE OF 3/4" BOLT			COMPONENTS
		A307 or Welded Stud	A325	A490	STELCAM 13
• Resistance to lateral force R max*		4 kips	13 kips	17 kips	1 Clip 5120/16/38 made to accommodate 3/4", 7/8" and 1" hardware.
• Bolt torque		125 ft-lbs	200 ft-lbs (min.**)	200 ft-lbs (min.**)	1 Self locking Cam, 512_/16 made to accommodate 3/4" hardware.
• Lateral adjustment, total		5/8"			Plain, No Color. Please indicate bolt size when ordering.
• "N" available noses		7/16", 5/8", 15/16"			
• Weight		1.5 lbs			
NOTES					
See "Selection Table" for "F" Dimensions.					
See "General Specifications Stelcam Series" for additional clip information.					

* R is calculated on the basis that the bolt threads are excluded from the shear plane.

**Bolt torque shown is minimum required for clip performance. However, bolts can be torqued to higher value to meet applicable structural codes.

GANTREX RAIL CLIP STELCAM® 13

SELECTION TABLE					
RAIL SIZE	F (in)	RAIL ONLY CLIP PART NO.	GANTREX PAD MODEL NO.	RAIL ON GANTREX PAD CLIP PART NO.	AT SPLICE BAR CLIP PART NO.
60 ASCE	4 1/4"	Stelcam 13/60	105 RFS	Stelcam 13/60 P	Stelcam 13C (4 per joint)
80 ASCE	5"	Stelcam 13/80	130 RFS	Stelcam 13/80P	
85 ASCE	5 3/16"	Stelcam 13/85	130 RFS	Stelcam 13/85P	
104 CR	5"	Stelcam 13/104	130 RFS	Stelcam 13/104P	
105 CR	5 3/16"	Stelcam 13/105	130 RFS	Stelcam 13/105P	
135 CR	5 3/16"	Stelcam 13/135	130 RFS	Stelcam 13/135P	

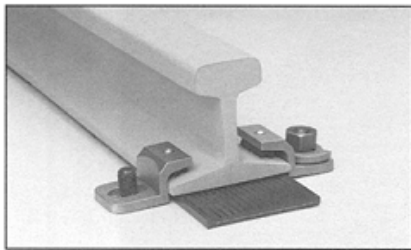
NOTES

- 1) To order clips without rubber noses consult GANTREX for proper selection.
- 2) GANTREX clips are available to suit most rail sections. Please consult GANTREX for details if your rail does not appear in the above table.
- 3) GANTREX recommends that rail joints be welded wherever possible.
- 4) Contact GANTREX for available protective coatings.

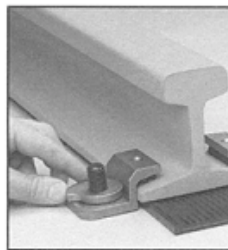
MATERIALS

Self-locking Cam Ductile Cast Iron
 Clip Ductile Cast Iron
 Pressure Block (Nose) Synthetic Rubber

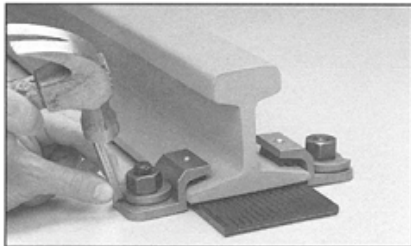
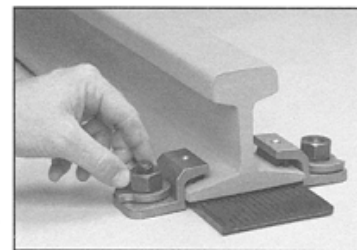
INSTALLATION



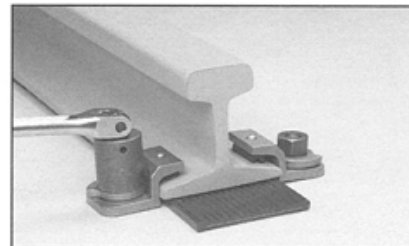
1. Position clip on bolt or stud.



2. Position self-locking cam. Install and lightly tighten nut.



3. Adjust self-locking cam to ensure tight contact between the rail and clip.



4. Tighten nut to required torque.

- Install clips in opposing pairs. (never stagger)
- Do not use cleaning fluids or protective coatings which contain ketones or similar chemicals, as they may seriously damage the rubber nose.

For complete crane runway installation services including rail welding, please contact GANTREX SYSTEMS through any of the sales offices listed below.

GANTREX reserves the right to discontinue or change specifications at any time without prior notice and without incurring any obligation whatsoever.
 PATENTS APPLIED FOR IN MOST COUNTRIES INCLUDING THE UNITED STATES AND CANADA



TOLL FREE: 800 2 GANTREX (800) 242-6873

Web site: www.gantrex.com • Email: sales@gantrex.com

© GANTREX, 2008
 PRINTED in U.S.A.

Rev. 01/08