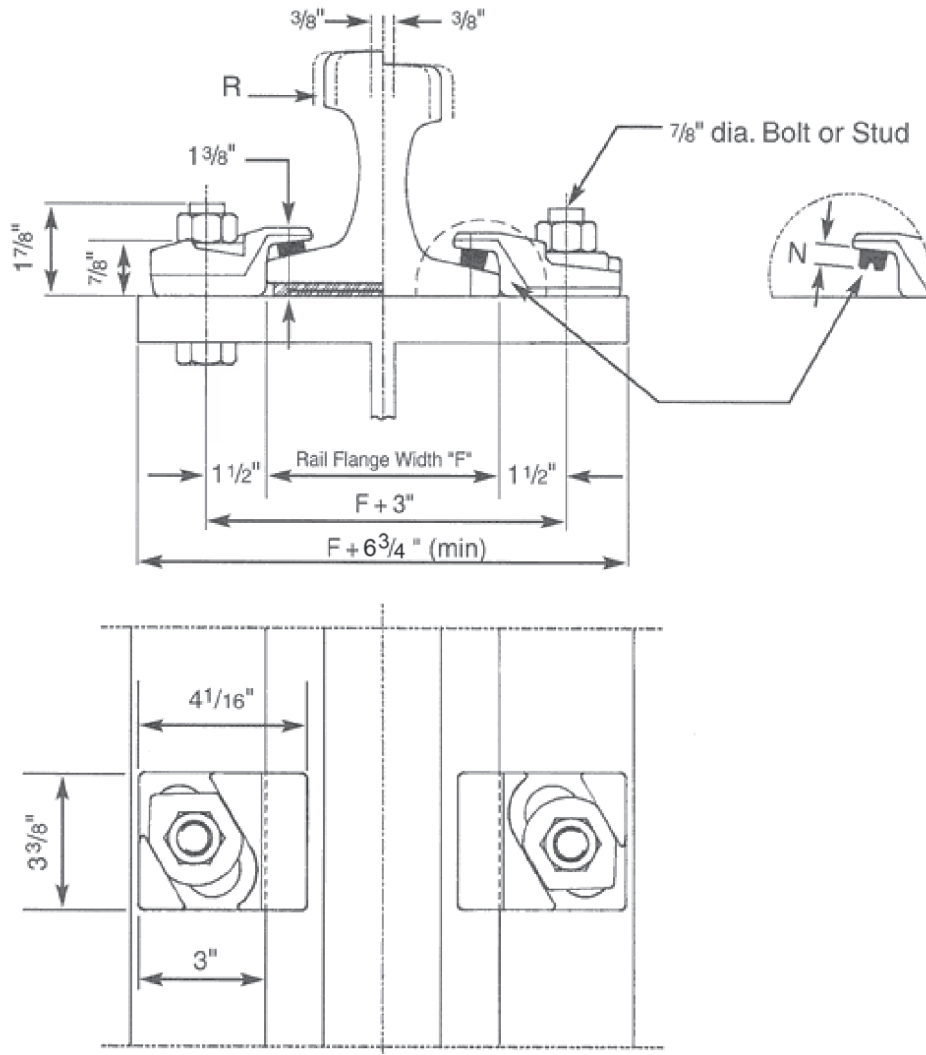


ASSEMBLY WITH PAD

ASSEMBLY WITHOUT PAD



SPECIFICATIONS	TYPE OF 7/8" BOLT			COMPONENTS
	A307 or Welded Stud	A325	A490	
• Resistance to lateral force R max* with threads included in shear plane	6 kips	18 kips	24 kips	1 Clip 3124\20\36*
• Bolt torque	200 ft-lbs	200 ft-lbs (min.**)	200 ft-lbs (min.**)	1 Clip 3124\20\42*
• Lateral adjustment, total	3/4"			1 Special Washer 3124R
• "N" available noses	1/2"			1 Washer, 7/8" Diameter
• Weight	2 lbs			
NOTES				
See "Selection Table" for "F" Dimensions.				
See "General Specifications 3000 Series" for additional clip information.				

* R is calculated on the basis that the bolt threads are excluded from the shear plane.

**Bolt torque shown is minimum required for clip performance. However, bolts can be torqued to higher value to meet applicable structural codes.

GANTREX RAIL CLIP 3124

SELECTION TABLE					
RAIL SIZE	F (in)	RAIL ONLY CLIP PART NO.	GANTREX PAD MODEL NO.	RAIL ON GANTREX PAD CLIP PART NO.	AT SPLICE BAR CLIP PART NO.
104 CR	5"	3124/104	130 RFS	3124/104P	3124C (4 per joint)
105 CR	5 3/16"	3124/105	130 RFS	3124/105P	
135 CR	5 3/16"	3124/135	130 RFS	3124/135P	
171 CR	6"	3124/171	150 RFS	3124/171P	
175 CR	6"	3124/175	150 RFS	3124/175P	

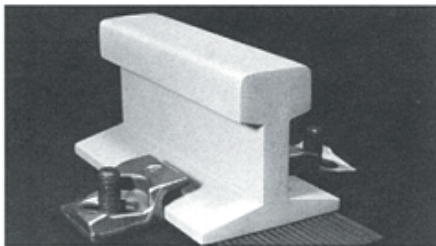
NOTES

- 1) To order clips without rubber noses consult GANTREX for proper selection.
- 2) GANTREX clips are available to suit most rail sections. Please consult GANTREX for details if your rail does not appear in the above table.
- 3) GANTREX recommends that rail joints be welded wherever possible.
- 4) Contact GANTREX for available protective coatings.

MATERIALS

Special Washer Ductile Cast Iron
 Clip Forged Steel
 Pressure Block (Nose) Synthetic Rubber

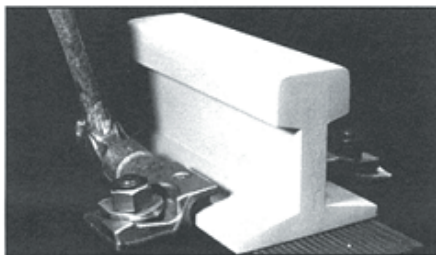
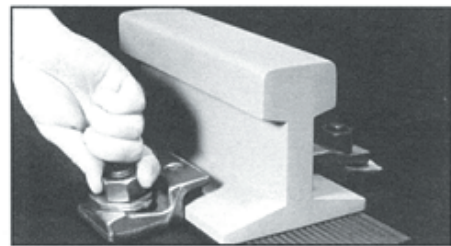
INSTALLATION



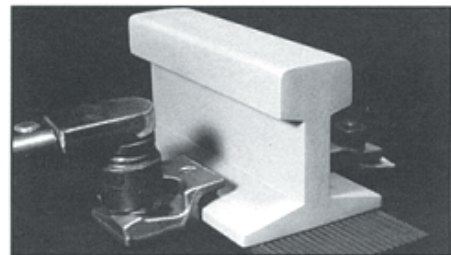
1. Position clip on bolt or stud.



2. Position special washer and lightly tighten nut.



3. Adjust clip forward to ensure tight contact with rail flange edge.



4. Tighten nut to required torque.

- Install clips in opposing pairs. (never stagger)
- Do not use cleaning fluids or protective coatings which contain ketones or similar chemicals, as they may seriously damage the rubber nose.

For complete crane runway installation services including rail welding, please contact GANTREX SYSTEMS through any of the sales offices listed below.

GANTREX reserves the right to discontinue or change specifications at any time without prior notice and without incurring any obligation whatsoever.



TOLL FREE: 800 2 GANTREX (800) 242-6873

Web site: www.gantrex.com • Email: sales@gantrex.com

© GANTREX, 2008
 PRINTED in U.S.A.

Rev. 01/08